

Don't put your life on the line

Keeping tree industry workers safe around powerlines

Fact sheet

Electricity can kill in an instant

Don't put your life on the line – always look up and live when you are working near powerlines.

Trees and branches can conduct electricity and cause electric shock or death.

Tradespeople, vegetation workers and arborists need to take special care when working near overhead powerlines because a simple mistake or a shortcut can be fatal.

Follow these simple steps to help stay safe.

Know the No Go Zone

The first step is to know the No Go Zone framework. Please refer to page 5 for the minimum clearance guidelines.

It is important to know what skills and training you require to perform certain tasks. This will vary depending on who you are working for, and the type of electric lines you are working near to.

There are three different requirements that vegetation workers may need to comply with depending upon who they are working for, or engaged by, and their qualifications and training. The three requirements depend on whether working for or contracted to:

1. a private company or person
2. a local council, or
3. a Victorian Electricity Supply Industry (VESI) company.

Before you start work

In addition to the No Go Zone and training requirements, it is important to anticipate all risks and think outside the square.

If you are working in a tree near powerlines, and particularly if you are holding a long branch, you are in a potentially very dangerous situation.

- Energy Safe recommends that to remain safe, those working for a private company or person should always maintain the 3m No Go Zone clearance from powerlines when climbing trees.

Note: At a minimum, private contractors must comply with the requirements contained in Regulation 614, 616, 617, 618 of Victoria's *Electricity Safety (General) Regulations 2019*. You should also consider any other duties and obligations you have to ensure the safety of workers and the safety of others, which includes meeting the requirements of the Victorian OHS Act.

- Always check that foliage is far enough away from powerlines for safe work to begin.
- Always maintain control of vegetation when cutting near powerlines, plan where the arc of a branch will fall or cut branch into small sections to maintain clearance from powerlines.
- Ensure that you and those you are working with are properly trained and qualified for the job you are doing.
- Only cut branches or sections of branches that are of a manageable size.

Only proceed if it is safe

If there is any concern regarding the safety of a tree clearing job, do not proceed. Discuss job safety with the local electricity distributor before starting work. You are required to notify them when working near their powerlines.

Always remember that you have the right to refuse work if the job is unsafe.

Do the job properly

All workers should constantly monitor the location of machinery and equipment that could come into contact with powerlines, including EWP's, ladders, ropes, pole saws and power pruners.

Every worker should know the No Go Zone guidelines for working near powerlines, as well as:

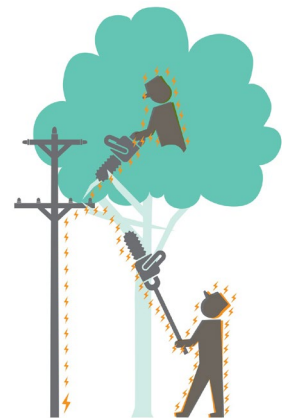
- being suitably trained, qualified, authorised and experienced
- always completing a hazard analysis before starting work
- discussing identified hazards within the work group so everyone is aware
- never cutting corners and never starting a job unless it is safe to proceed
- repeatedly checking the location of powerlines while work is underway as their position can change significantly due to wind and temperature.

Warn other workers

Tradespeople, vegetation workers and arborists who are working near powerlines and electrical infrastructure need to be extremely careful that they, or their equipment, does not touch live wires.

Anyone entering the worksite needs to be aware of these risks. Actions should be taken to ensure that people who don't understand these hazards, or are not appropriately trained and authorised, are kept well away.

Trees and branches can conduct electricity. Cutting a branch that falls onto a powerline can cause a fault to earth and electrocution. This can occur whether operating pole saws or chainsaws from the ground or in a tree.



Guidelines for minimum clearances for vegetation workers

These guidelines provide vegetation workers with guidance on the safe working distance from overhead electrical assets.

There are three different requirements that vegetation workers may need to comply with depending upon who they are working for, or engaged by, and their qualifications and training. The three requirements are explained further below.

Private work

Look up and live

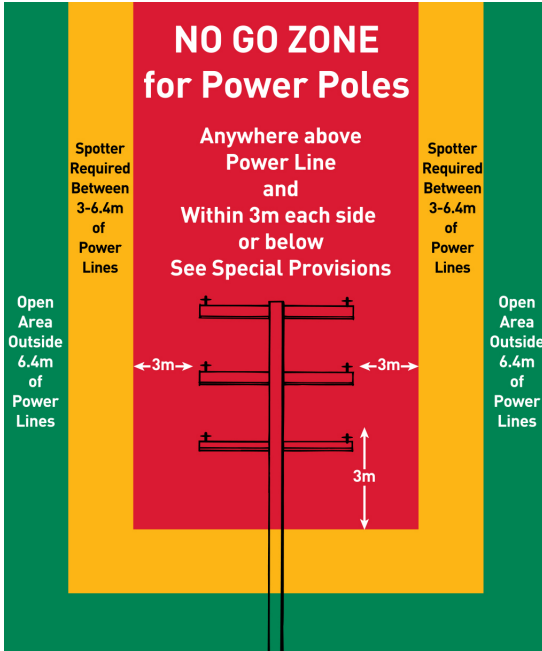
Get to know Victoria's No Go Zone guidelines – they provide a framework for working safely near electrical infrastructure.

Energy Safe recommends private tree contractors maintain the No Go Zone 3m exclusion zone.

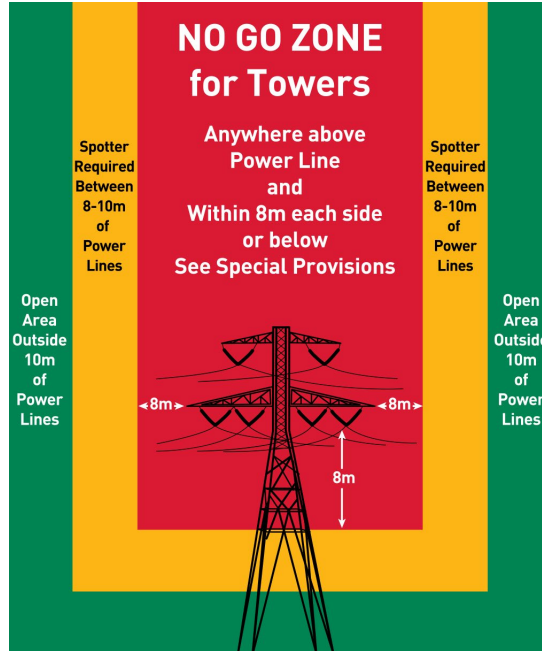
However, at a minimum, private contractors must comply with the requirements contained in Victoria's Electricity Safety (General) Regulations 2019, in particular Regulations 614, 616, 617, 618.

You should also consider any other duties and obligations you have to ensure the safety of workers and the safety of others, which includes meeting the requirements of the Victorian OHS Act.

The latest version of the No Go Zone rules can be found at: www.worksafe.vic.gov.au



Overhead powerlines on poles



Overhead powerlines on towers

Council work

Vegetation management work in the vicinity of, or near live overhead powerlines performed on behalf of a local council, who have electric line clearance responsibilities defined by the Act, is to be undertaken in compliance with these documents:

- *The Code of Practice on electrical safety for work on or near high voltage electrical apparatus* (known as the Blue Book)
- *Electrical safety rules for vegetation management work near overhead powerlines by non-electrical workers.*

For relevant overhead electrical asset clearances see figure 1 and table A.

- Information on the training requirements for those not working for, or under the control of an electricity asset owner, but who are working for other responsible person/s, is addressed in *Electrical safety rules for vegetation management work near overhead powerlines by non-electrical workers.*

These documents are available on ESV's website at:

www.esv.vic.gov.au/industry-guidance/electrical/line-clearance/managing-trees-near-powerlines

Figure 1

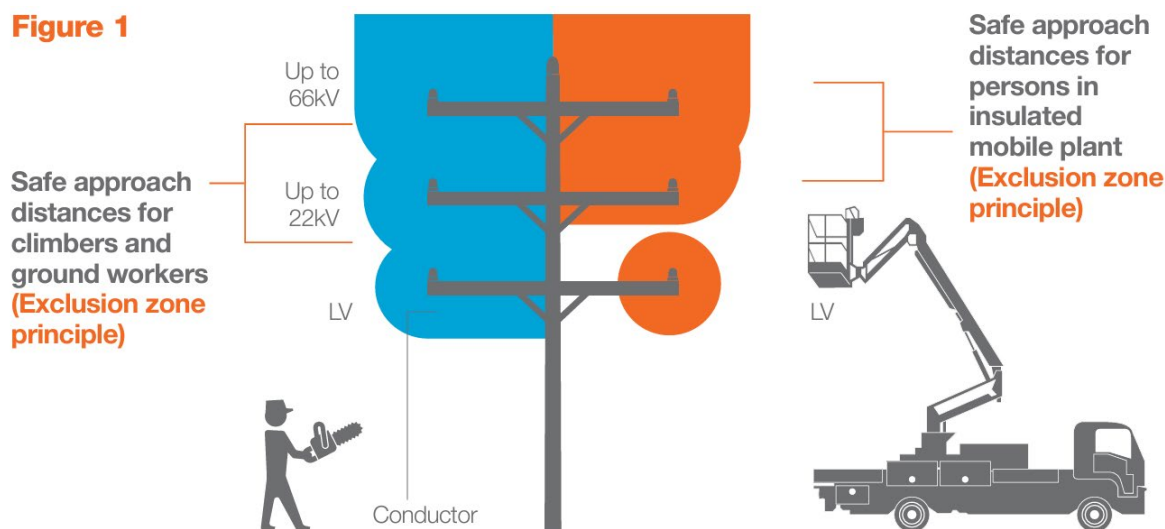


Table A: Safe approach distances for vegetation workers engaged by or working for a local council

Council vegetation work	Nominal phase to phase AC voltage	Personal (body) clearances (mm)	Insulated mobile plant (mm)	Tools and equipment (mm)
Working from insulated mobile plant	LV insulated cable	No contact	200 [#]	200
	LV open wire	300	1000 [#]	300
	HV up to 22*	1000	1200 [#]	1000
	HV from 22 up to 66*	2000	2000 [#]	2000
For ground worker and climber	LV insulated cable	200		200
	LV open wire*	1000		1000
	HV up to 22*	1200		1000
	HV from 22 up to 66*	2000		2000

Notes:

- Energy Safe recommends private tree contractors maintain the NGZ 3m exclusion zone. However, at a minimum, private contractors must comply with the requirements contained in Victoria’s Electricity Safety (General) Regulations 2019, in particular Regulations 614, 616, 617, 618. You should also consider any other duties and obligations you have to ensure the safety of workers and the safety of others, which includes meeting the requirements of the Victorian OHS Act.
- For VESI vegetation work approach distances refer to www.vesi.com.au

* **Work over conductor exclusion zones not permitted.**

ESV recommended minimum insulated mobile plant clearances.

Victorian electricity supply industry (VESI) work

Vegetation management work in the vicinity of or near live overhead powerlines by people working for a distribution business is to be undertaken in compliance with this document:

- *The VESI Vegetation Management Guideline.*

Further information on the training requirements for those working for, or under the control of an electricity asset owner is also addressed in the VESI document titled; *Vegetation Management Guideline*, which can be found at www.vesi.com.au

Questions?

Contact the relevant distribution business for advice.

AusNet Services	1300 301 101	Public Transport Victoria (PTV)
1300 360 795	Jemena	1800 800 007
Powercor	1300 131 871	
13 22 06	United Energy	
CitiPower	1300 131 689	

For further information go to esv.vic.gov.au or phone Energy Safe Victoria on (03) 9203 9700.

Energy Safe Victoria

ABN 27 462 247 657

Head Office

Level 5, 4 Riverside Quay
Southbank VIC 3006
03 9203 9700

info@esv.vic.gov.au
esv.vic.gov.au

Postal address

PO Box 262
Collins Street West VIC 8007

This brochure has been endorsed by the Victorian Energy Safety Commission (ESV).

Authorised and published by the Victorian Government, Melbourne

December 2023

© **Copyright State of Victoria 2023**

You are free to re-use this work under a Creative Commons Attribution 4.0 licence, provided you credit the State of Victoria (Energy Safe Victoria) as author, indicate if changes were made and comply with the other licence terms. The licence does not apply to any images, photographs or branding, including Government logos.